

REV	LOCATIONS	DESCRIPTION	DATE	REVISER	APPD
1		Change the P.C.Board layout	15/MAR/21	KATE	CHERRY
2		Update dimensions and tolerances	07/AUG/24	MATT	LEO

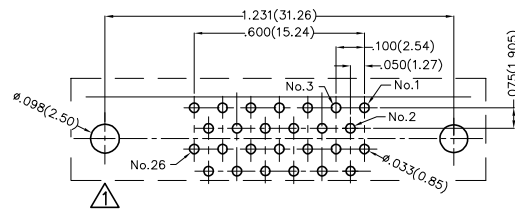
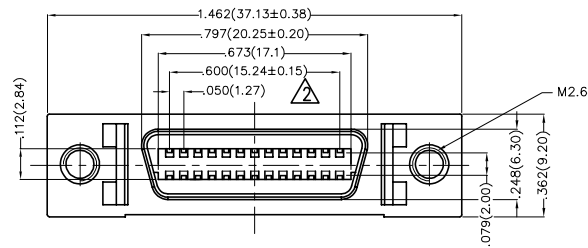
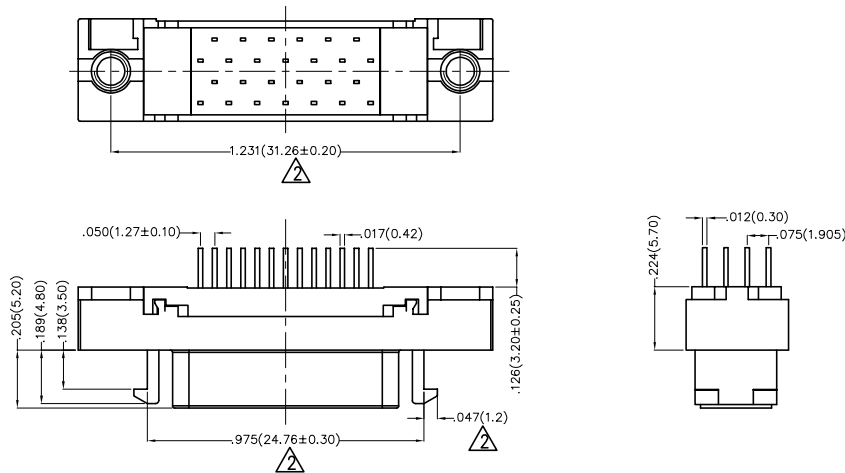
SPECIFICATIONS

Electrical

Current Rating: 1A AC(rms)/DC  
 Voltage Rating: 250V AC(rms)/DC  
 Contact Resistance: 30 mΩ Max  
 Insulation Resistance: 500 MΩ Min  
 Withstanding Voltage: 500V AC r.m.s  
 Temperature Range—Operating: -55°C~+105°C

Material and Plating

Housing: PBT (UL 94V-0)  
 Contact: Phosphor Bronze  
 Contact plating: Selective gold in contact area, tin on tail  
 Shell: Zinc Alloy



Recommended P.C.Board Layout  
 General Tolerances: ±0.05mm

Ordering Information

FCS 26 02 - F0 D S 3 XX K6 K A  
 1 2 3 4 5 6 7 8 9 10 11

1	Category FCS-SCSI	2	Circuits 26	3	Distinction No. 02	4	Type F0-Female	5	Assembly Layout D-DIP	6	Entry Angle S-180° Vertical
7	Plating 3-Selective gold in contact area, tin on tail	8	Thickness of Plating 00-Gold flash 03-3μ" Custom plate available	9	Color-Resin K6-Black	10	Packaging K-Tray	11	Distinction Type A-Type A		

 THIRD ANGLE PROJECTION	GENERAL TOLERANCES (UNLESS SPECIFIED)		APPROVE BY FRANK	DATE 19/JUL/13	PART NO. FCS2602-FODS3XXK6KA	ITEM NO. FCS2602	 Building Technology Cornerstone
	DESIGN UNITS Inch (metric)	X.±0.12(0.30) X.X±.008(0.20)	X'±5" .X'±2'	CHECKED BY CHERRY	DATE 19/JUL/13	TITLE SCSI Connector Pitch 1.27mm 180° Vertical Female	
SCALE 5:1	SIZE A4	X.XX±.006(0.15) X.XXX±.004(0.10)	.XX±1" .XX±0.5"	DRAWN BY KEVIN	DATE 19/JUL/13	THIS DRAWING CONTAINS INFORMATION THAT IS PROPRIETARY TO TXGA INDUSTRIAL ELECTRONICS(S.Z)CO.,LTD AND SHOULD NOT BE USED WITHOUT WRITTEN PERMISSION	

1 2 3 4 5 6 7 8

REV	LOCATIONS	DESCRIPTION	DATE	REVISER	APPD
1		Change the P.C.Board layout	15/MAR/21	KATE	CHERRY
2		Update dimensions and tolerances	07/AUG/24	MATT	LEO

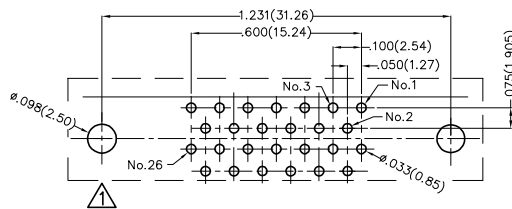
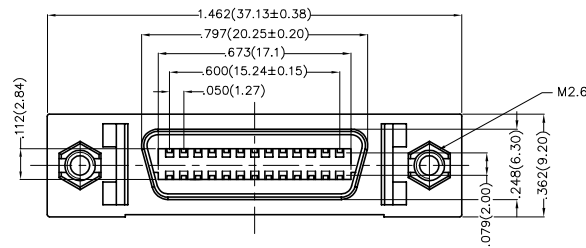
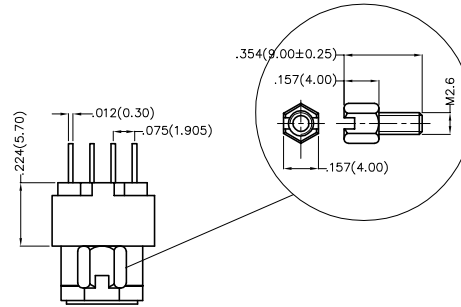
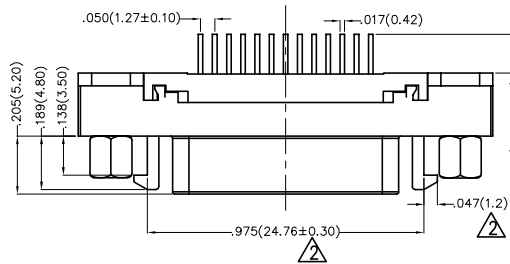
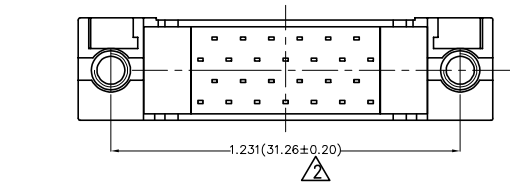
SPECIFICATIONS

Electrical

Current Rating: 1A AC(rms)/DC  
 Voltage Rating: 250V AC(rms)/DC  
 Contact Resistance: 30 mΩ Max  
 Insulation Resistance: 500 MΩ Min  
 Withstanding Voltage: 500V AC r.m.s  
 Temperature Range-Operating: -55°C~+105°C

Material and Plating

Housing: PBT (UL 94V-0)  
 Contact: Phosphor Bronze  
 Contact plating: Selective gold in contact area, tin on tail  
 Shell: Zinc Alloy



Recommended P.C.Board Layout  
 General Tolerances: ±0.05mm

Ordering Information

FCS 26 02 - F0 D S 3 XX K6 K B  
 1 2 3 4 5 6 7 8 9 10 11

1	Category FCS-SCSI	2	Circuits 26	3	Distinction No. 02	4	Type F0-Female	5	Assembly Layout D-DIP	6	Entry Angle S-180° Vertical
7	Plating 3-Selective gold in contact area, tin on tail	8	Thickness of Plating 00-Gold flash 03-3μ" Custom plate available	9	Color-Resin K6-Black	10	Packaging K-Tray	11	Distinction Type B-Type B		

 THIRD ANGLE PROJECTION	GENERAL TOLERANCES (UNLESS SPECIFIED)		APPROVE BY FRANK	DATE 19/JUL/13	PART NO. FCS2602-FODS3XXK6KB	ITEM NO. FCS2602	 Building Technology Cornerstone
	DESIGN UNITS Inch (metric)	X.±.012(0.30) X.X±.008(0.20)	X'±5' .X'±2'	CHECKED BY CHERRY	DATE 19/JUL/13	TITLE SCSI Connector Pitch 1.27mm 180° Vertical Female	
SCALE 5:1	SIZE A4	X.XX±.006(0.15) X.XXX±.004(0.10)	.XX±1' .XX±0.5'	DRAWN BY KEVIN	DATE 19/JUL/13	THIS DRAWING CONTAINS INFORMATION THAT IS PROPRIETARY TO TXGA INDUSTRIAL ELECTRONICS(S.Z)CO.,LTD AND SHOULD NOT BE USED WITHOUT WRITTEN PERMISSION	

1 2 3 4 5 6 7 8

REV	LOCATIONS	DESCRIPTION	DATE	REVISER	APPD
1	△1	Change the P.C.Board layout	15/MAR/21	KATE	CHERRY
2	△2	Update dimensions and tolerances	07/AUG/24	MATT	LEO

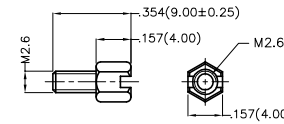
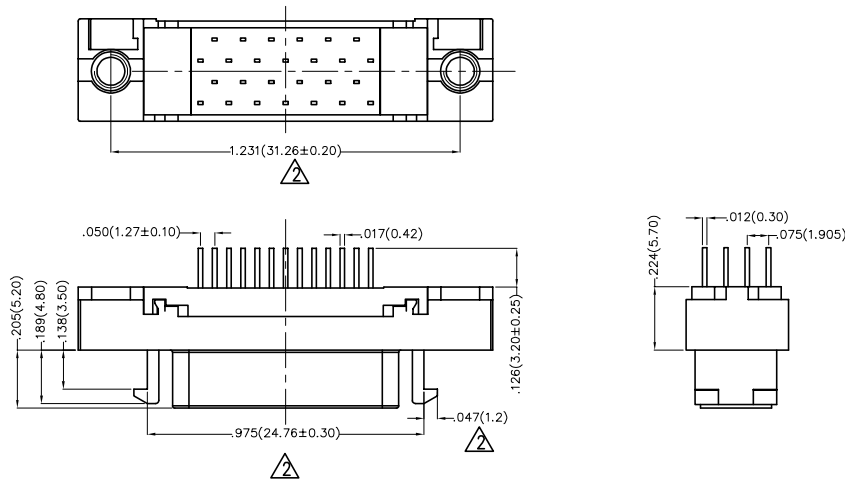
SPECIFICATIONS

Electrical

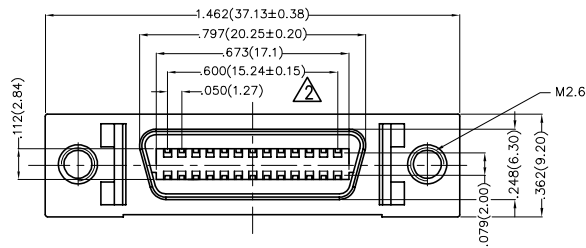
Current Rating: 1A AC(rms)/DC  
 Voltage Rating: 250V AC(rms)/DC  
 Contact Resistance: 30 mΩ Max  
 Insulation Resistance: 500 MΩ Min  
 Withstanding Voltage: 500V AC r.m.s  
 Temperature Range-Operating: -55°C~+105°C

Material and Plating

Housing: PBT (UL 94V-0)  
 Contact: Phosphor Bronze  
 Contact plating: Selective gold in contact area, tin on tail  
 Shell: Zinc Alloy



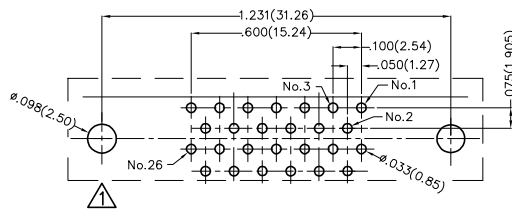
Screw (2pcs)



Ordering Information


FCS 26 02 - F0 D S 3 XX K6 K C  
 1 2 3 4 5 6 7 8 9 10 11

1	Category	2	Circuits	3	Distinction No.	4	Type	5	Assembly Layout	6	Entry Angle
	FCS-SCSI		26		02		F0-Female		D-DIP		S-180° Vertical
7	Plating	8	Thickness of Plating	9	Color-Resin	10	Packaging	11	Distinction Type		
	3-Selective gold in contact area, tin on tail		00-Gold flash 03-3μ"		K6-Black		K-Tray		C-Type C		
			Custom plate available								



Recommended P.C.Board Layout

General Tolerances: ±0.05mm

THIRD ANGLE PROJECTION	GENERAL TOLERANCES (UNLESS SPECIFIED)		APPROVE BY	DATE	PART NO.	ITEM NO.	 Building Technology Cornerstone
	X.±0.12(0.30)	X.±5°	FRANK	19/JUL/13	FCS2602-FODS3XXK6KC	FCS2602	
DESIGN UNITS Inch (metric)	X.X±.008(0.20)	.X'±2'	CHECKED BY	DATE	TITLE		REV 2
SCALE	X.XX±.006(0.15)	.XX'±1'	CHERRY	19/JUL/13	SCSI Connector Pitch 1.27mm 180° Vertical Female		SHEET NO. 1/1
5:1	X.XXX±.004(0.10)	.XXX'±0.5'	DRAWN BY	DATE	THIS DRAWING CONTAINS INFORMATION THAT IS PROPRIETARY TO TXGA INDUSTRIAL ELECTRONICS(S.Z)CO.,LTD AND SHOULD NOT BE USED WITHOUT WRITTEN PERMISSION		
			KEVIN	19/JUL/13			